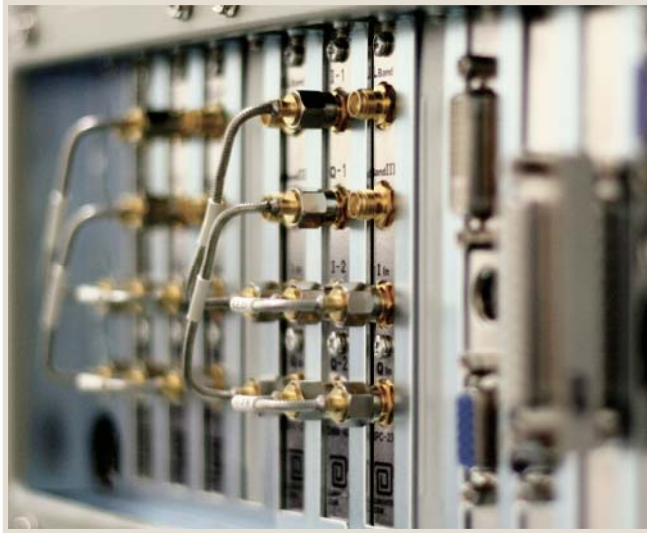


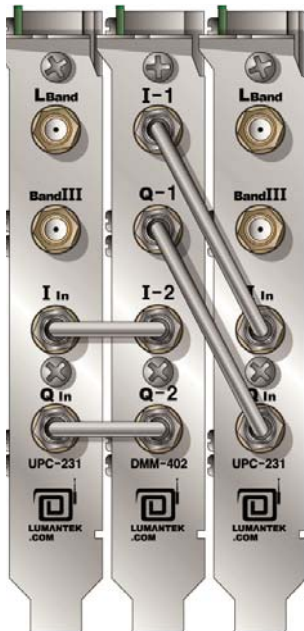
T-DMB/DAB+ PCI Modulator

DMM-402/ UPC-231



Overview

The DMB/DAB+ Multi Signal OEM PCI Generator, designed to meet all requirements encountered in DMB/DAB+ receiver Production supports not only Eureka-147 OFDM Modulation, but also RF up-converter which supports Band I,II,III, L with output power control from 0dBm to ~120dBm in 0.5dB step. In addition to complete DAB Auto testing applications, and provide API for design your own APPs.



DMB / DAB+ Signal Generator Apps

- Max RF Level Test (0 - -120 dBm)
- Min RF Level Test (0 - -120 dBm)
- All Frequency ScanTest
- DMB / DAB Test Pattern Library DVD Provided
- Easy Configuration profile save and recall
- User-friendly Interface
- 1 DMB PCI Modulator can be combined with Maximum 2 RF Up-converters (optional)



DMM-402 (DMB/ DAB+ PCI Modulator) Specification

- T-DMB/DMB + Modulator PCI BUS
- Compliant with EN 300 401 and ETS 300 799
- Support to all DAB Mode I/II/III/IV Modes
- Easy ETI stream Payout
- High Performance modulation (MER, IF Stability and others)
- Support device driver and API Window XP
- Offrt double IQ SMA port
- Output Frequency : Band II/III and L-BAND
- 2 X IQ Output Support
- Output Voltage : 1 Vp-p
- Output Impedance : 50 Ω
- Connector : SMA-Connector



UPC-231 (Band II, III, L RF Up-converter) Specification

This product provides Upconverter function of Multiple RF signals such as Band II, Band III and L-Band. You can use this product for your application with our other products such as DMM - 402, T-DMB Modulator PCI Adaptor. Selectable Band II / III or L-Band transmission and configuration 12 C Interface - Support daisy Chain configuration

Specifications

RF OUT

| Frequency | |
|------------|--|
| Range | Band II : 87.5 MHz~108 MHz Band III : 174 MHz~250 MHz L-Band : 1,452 GHz~1,492 GHz |
| Resolution | Band II / III : 1 KHz L-Band : 100 KHz |
| Accuracy | ±1 ppm |

Level

| | |
|------------|-----------------|
| Range | 0dBm ~ -120 dBm |
| Resolution | 0.5 dB |
| Accuracy | ±1 dB |

Connector

SMA - Connector

I/Q Input

| I/Q input | |
|-----------------|-------------------|
| Input oltage | : 1Vp-p |
| Input Impedance | : 50Ω |
| Connector | : SMA - Connector |

Simultaneous BAND II / III, L-BAND transmission and configuration 12C Interface - Support daisy chain configuration

Power Requirements

DC 12V (640mA) / DC 5V (910mA)

